

MEYER



BLUE





Artist's Impression



The distinctive Meyer Road is utmost East Coast prestige nestled in prime district 15. An exceptionally simple elegance of glass sheen soars skywards, reflecting the timelessness of this rare freehold luxury masterpiece in this coveted Meyer address.







This is Experiential Luxury by the Coast.

With its fathomless views over the ocean blue, MEYER BLUE is a rare freehold masterpiece that unfolds alongside breathtaking prospects on the horizon. Treasured heritage meets experiential luxury across 226 homes where every moment is an exquisite work of art, waiting to be discovered and cherished. In the vast open skyline, gather more time and space for life's finer things, one generation to the next.

Artist's Impression

0 7 : 2 0

A M

## Serenity at its most Splendid

The sun levitates over the sea and its limitless horizon, painting a golden radiance of light across East Coast calm, illuminating your balcony and framing the dawn of your day. Step out into the luminous shine.

0 7 : 2 0

A M

*Stretch. Breathe.*

Artist's Impression





2-Bedroom Premium (BPI)  
For illustration only



For illustration only

Greet the day from your cabana  
in the sky, and welcome possibilities  
as endless as the unparalleled and  
unblocked views of sea and city.



3-Bedroom Premium (CPI)  
For illustration only



Archipelago Pool  
Artist's Impression

Invigorate your day's intentions at the Archipelago Pool within a flutter of nature, or dive into the 40m Lap Pool that cascades into infinity amid lush coastal greens.



40m Lap Pool  
Artist's Impression

## From Coast to City

Seamless access to sprawling East Coast Park, world-class attractions and sports facilities, Katong-Joo Chiat's treasure trove of eateries and boutiques, and an honour roll of renowned schools brings infinite possibilities to this distinctive location. You'll go places from the laid-back charm and exclusivity of Meyer Road situated right by Katong Park MRT station and ECP.

1 1 : 4 6

A M

## From Coast to City

Seamless access to sprawling East Coast Park, world-class attractions and sports facilities, Katong-Joo Chiat's treasure trove of eateries and boutiques, and an honour roll of renowned schools brings infinite possibilities to this distinctive location. You'll go places from the laid-back charm and exclusivity of Meyer Road situated right by Katong Park MRT station and ECP.

**Connectivity**

- KATONG PARK MRT 6 mins walk
- TANJONG KATONG MRT 8 mins walk

**Notable Landmarks**

- EAST COAST PARK 8 mins walk
- TANJONG RHU PROMENADE PARK CONNECTOR 10 mins cycle
- PARKWAY PARADE 5 mins drive
- SINGAPORE SPORTS HUB 5 mins drive
- GARDENS BY THE BAY 8 mins drive
- SINGAPORE FLYER 8 mins drive
- SUNTEC CONVENTION & EXHIBITION CENTRE 8 mins drive
- ESPLANADE 10 mins drive
- MARINA BAY SANDS 10 mins drive
- ARTSCIENCE MUSEUM 10 mins drive
- CENTRAL BUSINESS DISTRICT 10 mins drive
- JEWEL CHANGI AIRPORT 15 mins drive

**Legend**

<b>AMENITIES</b>	<b>RECREATION</b>
SCHOOLS	LIFESTYLE AND LEISURE
SHOPPING	SWIMMING CLUBS
DINING	PADANG
HOTELS	KALLANG WATER SPORTS CENTRE

Disclaimer: All distances and travelling times are approximate only and taken from MEYER BLUE to respective destinations.



Coveted Connectivity  
and Panoramic Vistas



**MEYER BLUE**

Artist's Impression

## Breathtaking Prospects on the Horizon



Minutes from MEYER BLUE, masterplans for future forward livability will transform the new Greater Southern Waterfront, Marina Bay, Kallang Basin and upcoming Long Island off East Coast Park into dynamic urban landscapes, infusing your immediate vicinity with sustainable interactions with nature, enhanced recreation and history.



A paradise of unique possibilities awaits, as Long Island comes to life, enhancing East Coast waterfront living with 20km of coastal parks and vibrant sea activities. Nearby, the Kallang precinct will be revitalised into a cosmopolitan bustle of sports, lifestyle, and entertainment events, with the addition of Singapore Sports School in the mix.

Extracted from The Straits Times – NDR 2024: Singapore to have accessible 120km southern coastline; new homes in Nicoll, Marina East, Aug 19, 2024.



# From Charming Heritage To Cosmopolitan Culture



Joo Chiat Shophouses

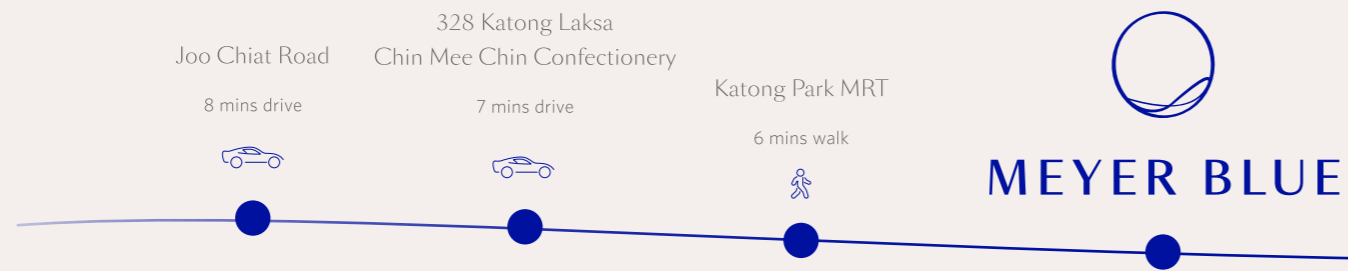


Chin Mee Chin Confectionery



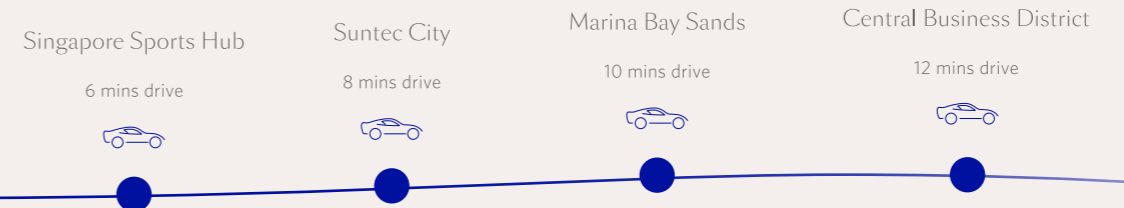
Joo Chiat

Immerse in a tapestry of rich Peranakan heritage next door at Katong-Joo Chiat, with artistic and contemporary pleasures at every turn, and an indulgence of delectable cuisines.



From your restful haven nestled in nature, the exhilarating CBD and magnificent Marina Bay district are just across the expressway, or an easy MRT or bus ride away.

Marina Bay Sands and Central Business District



Suntec City



East Coast Park

## Perfect Days in Panoramic Nature



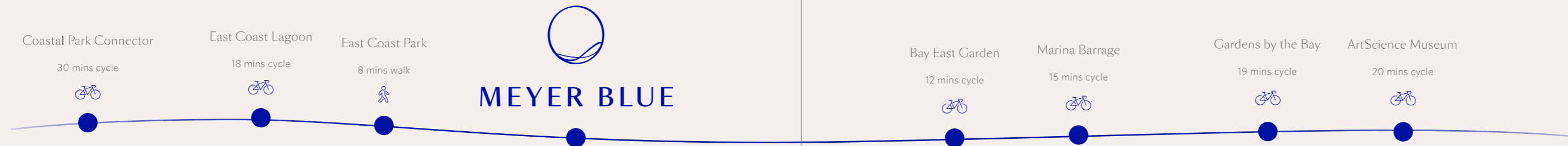
Tanjong Rhu Park Connector

Run, bike, or hike all across East Coast Park and the Coastal Park PCN to Changi Beach, shaded by magnificent historic trees and energised by colourful bursts of flora.



Bay East Park

Or take the peaceful, scenic route downtown all the way into the CBD, lined by gorgeously flowering landscapes, via the Eastern Coastal PCN looping Bay East Garden and bridging across Marina Barrage to Gardens by the Bay.



Gardens by the Bay



# Honour Roll Of Distinguished Schools

An eminence of acclaimed schools are within easy reach:

WITHIN 1km TO 2km

- Dunman High School
- Chung Cheng High School (Main)
- Tanjong Katong Primary School

BEYOND 2km

- Tanjong Katong Girls' School
- Kong Hwa School
- Haig Girls' School
- Tao Nan School
- Nexus International School
- Victoria Junior College



Tao Nan School



Kong Hwa School



Nexus International School



Dunman High School



Chung Cheng High School (Main),  
Tanjong Katong Primary School,  
Tanjong Katong Girls' School

4 mins drive

Kong Hwa School,  
Haig Girls' School,  
Tao Nan School,  
Victoria Junior College

7 mins drive

Nexus International School

13 mins drive

All distances and travelling times are approximates only and taken from MEYER BLUE to respective destinations.

0 5 : 1 8

P M

## A Magnificent Sanctuary for Rejuvenating and Revelling

Savour the comfortable calmness of simple yet sensorial design details energised by nature and infused with the air of a carefree holiday hideaway.



Your Own Exquisite Ebb And Flow



Archipelago Pool  
Artist's Impression



Club Lounge (Level 26)  
Artist's Impression

Host enchanted evenings in the Club Lounge's inviting spaces, dazzled by spectacular hues of blues and greens from the unfurling sky, sea and nature all around.

Amp up your workouts in the Sky Gym, with unobstructed views over the private landed enclave.



Sky Gym (Level 26)  
Artist's Impression



Wellness Pavilion  
Artist's Impression

Slip away to the Wellness Pavilion for meditative moments by the peace and quiet of the long lawn, or unwind to the soothing lapping of flowing waters at the Social Lounge.



Social Lounge  
Artist's Impression

From here, the coast is clear.



Artist's Impression

## Site Plan

Leave the city's chaotic urbanity and glide into MEYER BLUE's soothingly melodic natural landscapes. The jubilant Water Cascade arrival grandly welcomes you home to an uplifting flutter of natural tropical elements, awakening the senses. Stroll across the lushly landscaped Sun Deck, an oasis plush with restorative amenities, to the secret path leading to your favourite spot on the beach beyond.

### 1ST STOREY

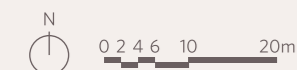
- |                                     |                               |
|-------------------------------------|-------------------------------|
| 1 Grand Arrival                     | 17 Garden Lawn                |
| 2 Concierge                         | 18 Sun Deck with Pool Cabanas |
| 3 Management Office (81 Meyer Road) | 19 Social Lounge              |
| 4 Water Cascade                     | 20 40m Lap Pool               |
| 5 Kid's Play                        | 21 Coastal Gym                |
| 6 Kid's Pool                        |                               |
| 7 Gourmet Pavilion                  |                               |
| 8 Spa Cove                          |                               |
| 9 Island Oasis Deck                 |                               |
| 10 Function Room 1 (The Pacific)    |                               |
| 11 Shower and Changing Rooms        |                               |
| 12 Steam Rooms                      |                               |
| 13 Archipelago Pool                 |                               |
| 14 Function Room 2 (The Atlantic)   |                               |
| 15 Oasis Lawn                       |                               |
| 16 Wellness Pavilion                |                               |

### OTHER FACILITIES

- |                               |
|-------------------------------|
| A Guard House                 |
| B Electrical Substation       |
| C Genset                      |
| D Side Gate                   |
| E Ventilation Shaft           |
| F Bicycle Park                |
| G Bicycle Park (Basement 1)   |
| H Bin Centre (Basement 1)     |
| Outline of Water Tank at Roof |



Artist's Impression



BP NO: A1716-00015-2023-BP01 DATED 13/08/2024

## The Meyer Club

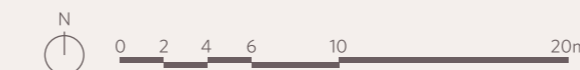
The pinnacle of cosmopolitan coastal living, where you can host family and friends in the Club Lounge, rev up in the Sky Gym, or simply relax and revel the unsurpassed views of the sea and city at the Sky Terrace and Sky Lawn.

### THE MEYER CLUB (26TH STOREY)

- |                |
|----------------|
| 22 Sky Terrace |
| 23 Sky Lawn    |
| 24 Sky Gym     |
| 25 Club Lounge |



Artist's Impression



BP NO: A1716-00015-2023-BP01 DATED 13/08/2024

# Choice Units

BEDROOM	TYPE	AREA
2-Bedroom Premium	BP1	62sqm   667sqft
	BP1(p)	62sqm   667sqft
2-Bedroom Premium + Study	BPS1	66sqm   710sqft
	BPS1(p)	66sqm   710sqft
3-Bedroom	C1	92sqm   990sqft
	C1(p)	92sqm   990sqft
3-Bedroom Premium	CP1	106sqm   1,141sqft
4-Bedroom Premium (with Private Lift)	DP1	142sqm   1,528sqft
	DP1(p)	142sqm   1,528sqft
	DP2	141sqm   1,518sqft
	DP2(p)	141sqm   1,518sqft
4-Bedroom Premium + Study (with Private Lift)	DPS1	161sqm   1,733sqft
	DPS1(p)	161sqm   1,733sqft
5-Bedroom Suite (with Private Lift)	E1	177sqm   1,905sqft
	E1(p)	177sqm   1,905sqft
Penthouse	PH1	278sqm   2,992sqft
	PH2	274sqm   2,949sqft
The Meyer Club		

83 MEYER ROAD, SINGAPORE 437910

UNIT/ FLOOR	01	02	03	04	05	06	07	08	09
	UPPER ROOF								
26		PH2 (#26-02)			PH1 (#26-05)				
25	DPS1	DP1	C1	BP1	BP1	E1	DP2	BPS1	CP1
24	DPS1	DP1	C1	BP1	BP1	E1	DP2	BPS1	CP1
23	DPS1	DP1	C1	BP1	BP1	E1	DP2	BPS1	CP1
22	DPS1	DP1	C1	BP1	BP1	E1	DP2	BPS1	CP1
21	DPS1	DP1	C1	BP1	BP1	E1	DP2	BPS1	CP1
20	DPS1	DP1	C1	BP1	BP1	E1	DP2	BPS1	CP1
19	DPS1	DP1	C1	BP1	BP1	E1	DP2	BPS1	CP1
18	DPS1	DP1	C1	BP1	BP1	E1	DP2	BPS1	CP1
17	DPS1	DP1	C1	BP1	BP1	E1	DP2	BPS1	CP1
16	DPS1	DP1	C1	BP1	BP1	E1	DP2	BPS1	CP1
15	DPS1	DP1	C1	BP1	BP1	E1	DP2	BPS1	CP1
14	DPS1	DP1	C1	BP1	BP1	E1	DP2	BPS1	CP1
13	DPS1	DP1	C1	BP1	BP1	E1	DP2	BPS1	CP1
12	DPS1	DP1	C1	BP1	BP1	E1	DP2	BPS1	CP1
11	DPS1	DP1	C1	BP1	BP1	E1	DP2	BPS1	CP1
10	DPS1	DP1	C1	BP1	BP1	E1	DP2	BPS1	CP1
09	DPS1	DP1	C1	BP1	BP1	E1	DP2	BPS1	CP1
08	DPS1	DP1	C1	BP1	BP1	E1	DP2	BPS1	CP1
07	DPS1	DP1	C1	BP1	BP1	E1	DP2	BPS1	CP1
06	DPS1	DP1	C1	BP1	BP1	E1	DP2	BPS1	CP1
05	DPS1	DP1	C1	BP1	BP1	E1	DP2	BPS1	CP1
04	DPS1	DP1	C1	BP1	BP1	E1	DP2	BPS1	CP1
03	DPS1	DP1	C1	BP1	BP1	E1	DP2	BPS1	CP1
02	DPS1	DP1	C1	BP1	BP1	E1	DP2	BPS1	CP1
01	DPS1(p)	DP1(p)	C1(p)	BP1(p)	BP1(p)	E1(p)	DP2(p)	BPS1(p)	
B1	CARPARK								

# Top-of-the-line Finishings



MEYER BLUE presents the easy elegance of impressively intelligent and intuitive appliances and fittings from V-ZUG, Gessi and Laufen, and exquisite Italian-made Master Bedroom wardrobes by Poliform. Their subtle aesthetics harmoniously flow with the upscale and carefree resort feel of seafront living, featuring environmentally-friendly elements dedicated to anticipating your daily well-being needs with stylish solutions.



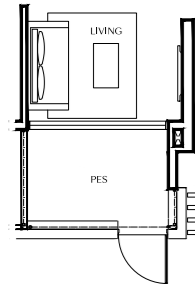
## 2-Bedroom Premium

TYPE BP1  
62 sqm (667 sqft)

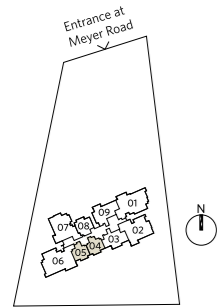
#02-04 to #25-04  
#02-05\* to #25-05\*

TYPE BP1(p)  
62 sqm (667 sqft)

#01-04  
#01-05\*  
\*Mirrored unit

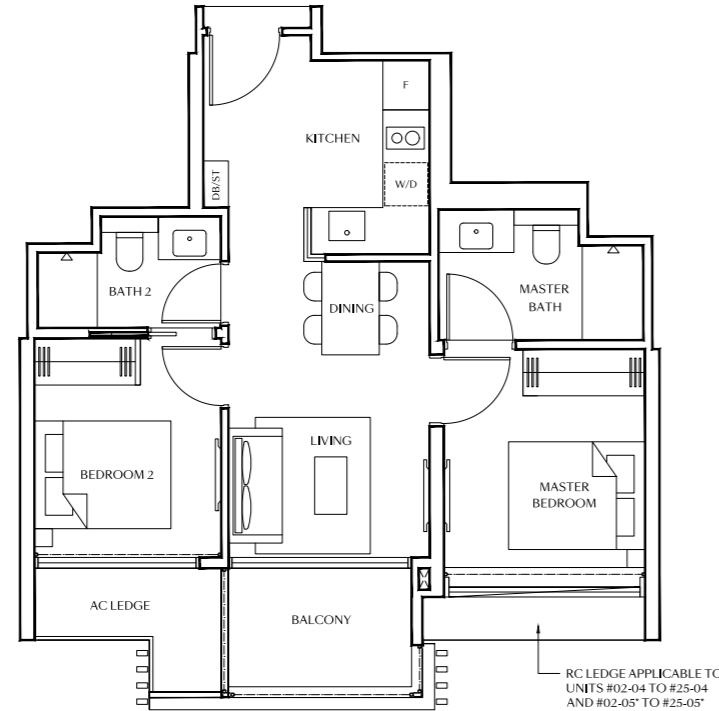


\*Not drawn to scale



LEGEND:

□--□ Acoustic Blind With Supports



AREAS INCLUDE AC LEDGE, BALCONY OR PRIVATE ENCLOSED SPACE (PES), WHERE APPLICABLE.  
ALL RC LEDGES ARE EXCLUDED FROM STRATA AREA AND NON-LOAD BEARING.  
THE PLANS ARE SUBJECT TO CHANGE AS MAY BE REQUIRED BY RELEVANT AUTHORITIES.  
ALL AREAS AND MEASUREMENTS STATED HEREIN AS APPROXIMATE AND SUBJECT TO FINAL SURVEY.

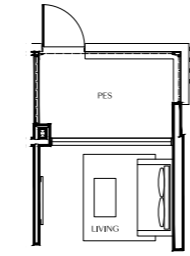
## 2-Bedroom Premium + Study

TYPE BPS1  
66 sqm (710 sqft)

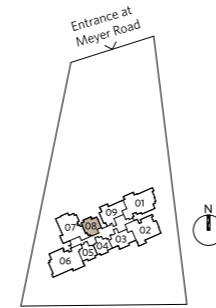
#02-08 to #25-08

TYPE BPS1(p)  
66 sqm (710 sqft)

#01-08

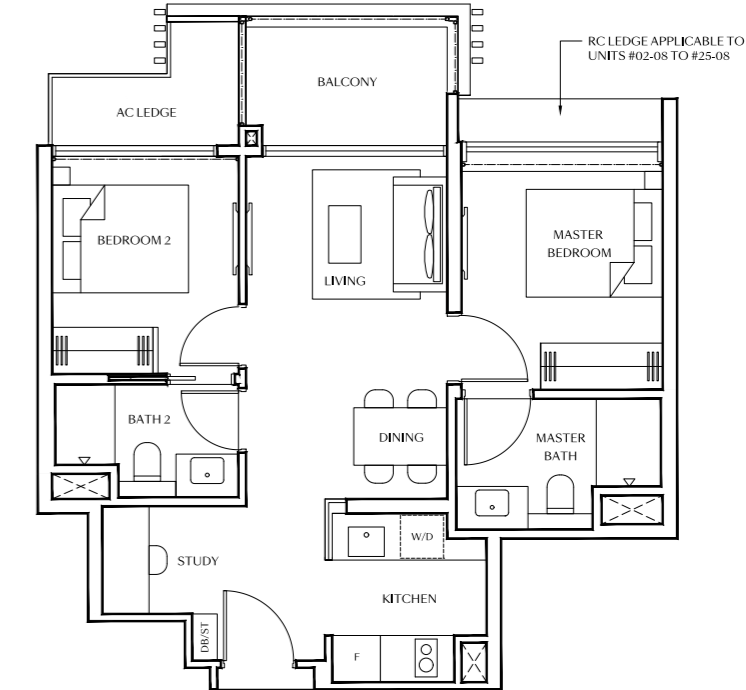


\*Not drawn to scale



LEGEND:

□--□ Acoustic Blind With Supports

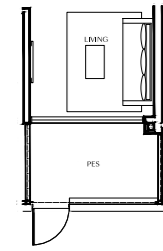


AREAS INCLUDE AC LEDGE, BALCONY OR PRIVATE ENCLOSED SPACE (PES), WHERE APPLICABLE.  
ALL RC LEDGES ARE EXCLUDED FROM STRATA AREA AND NON-LOAD BEARING.  
THE PLANS ARE SUBJECT TO CHANGE AS MAY BE REQUIRED BY RELEVANT AUTHORITIES.  
ALL AREAS AND MEASUREMENTS STATED HEREIN AS APPROXIMATE AND SUBJECT TO FINAL SURVEY.

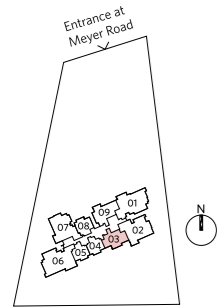
# 3-Bedroom

TYPE C1  
92 sqm (990 sqft)  
#02-03 to #25-03

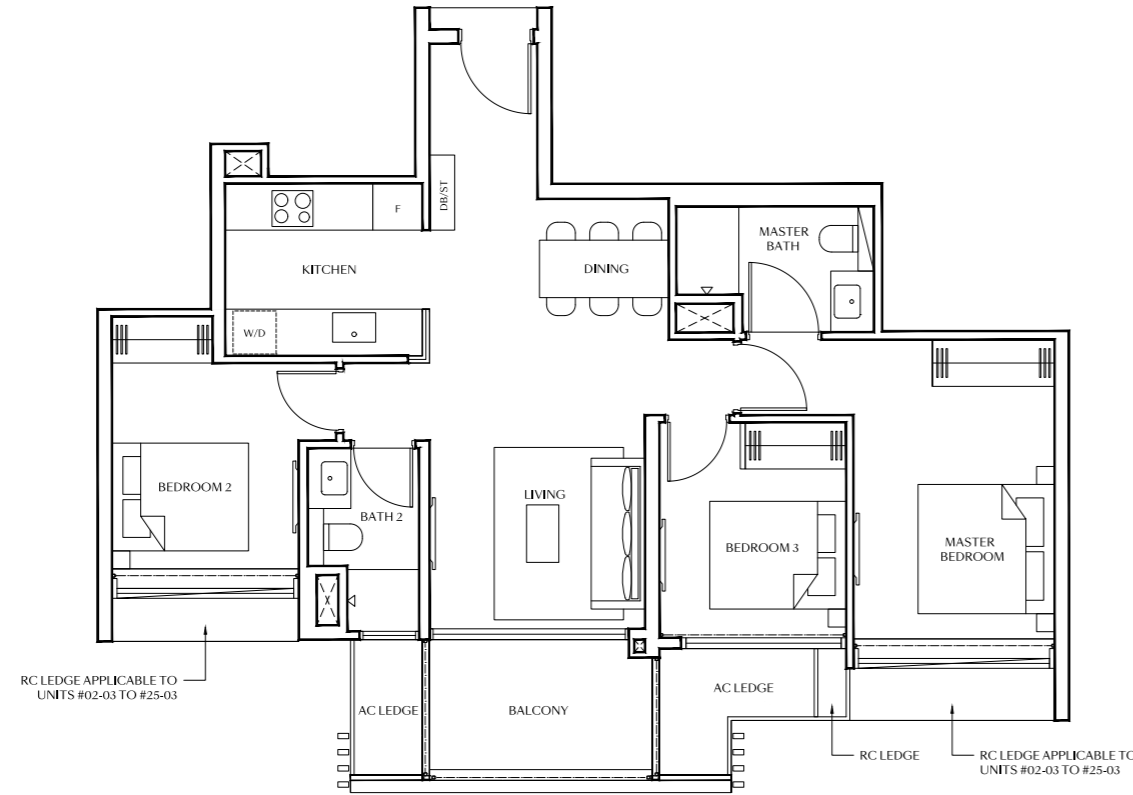
TYPE C1(p)  
92 sqm (990 sqft)  
#01-03



\*Not drawn to scale



LEGEND:  
□--□ Acoustic Blind With Supports

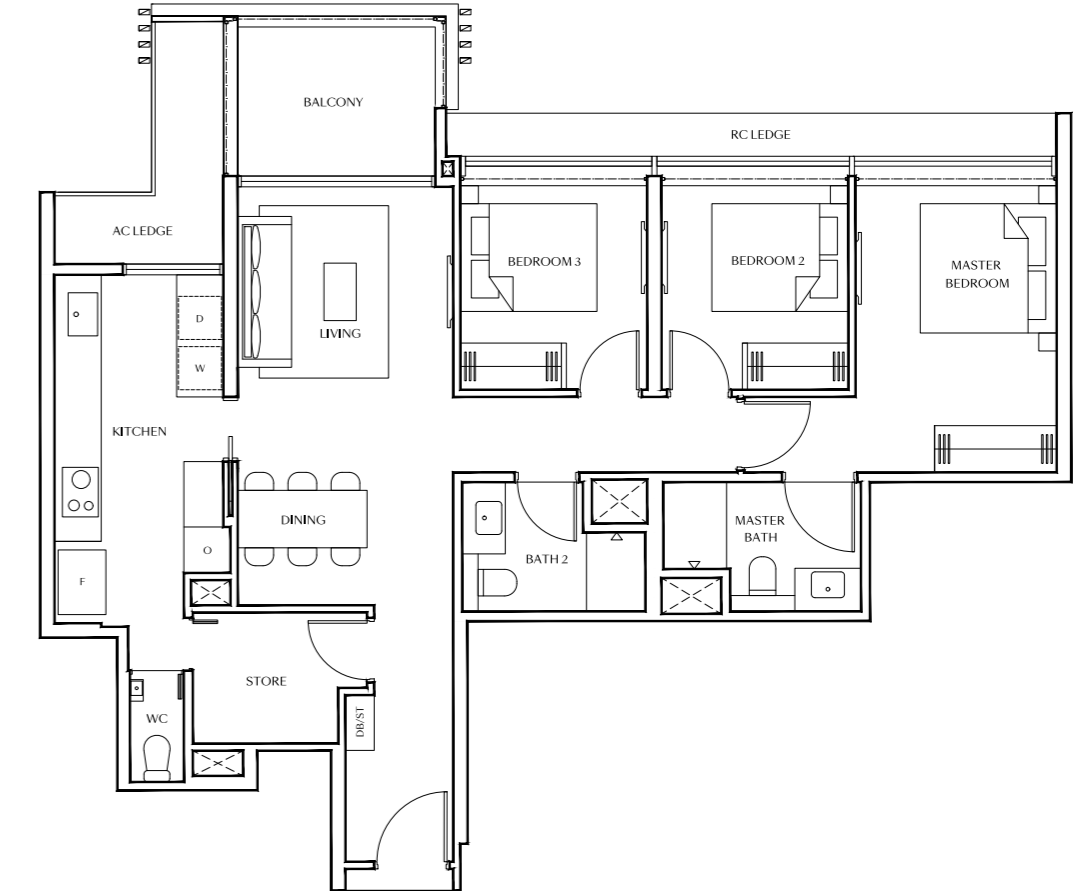
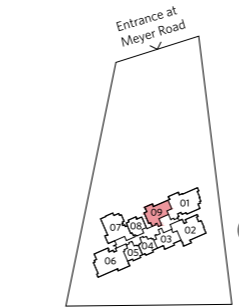


AREAS INCLUDE AC LEDGE, BALCONY OR PRIVATE ENCLOSED SPACE (PES), WHERE APPLICABLE.  
ALL RC LEDGES ARE EXCLUDED FROM STRATA AREA AND NON-LOAD BEARING.  
THE PLANS ARE SUBJECT TO CHANGE AS MAY BE REQUIRED BY RELEVANT AUTHORITIES.  
ALL AREAS AND MEASUREMENTS STATED HEREIN AS APPROXIMATE AND SUBJECT TO FINAL SURVEY.

# 3-Bedroom Premium

TYPE CP1  
106 sqm (1141 sqft)  
#02-09 to #25-09

LEGEND:  
□--□ Acoustic Blind With Supports

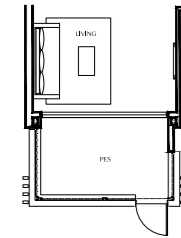


AREAS INCLUDE AC LEDGE, BALCONY OR PRIVATE ENCLOSED SPACE (PES), WHERE APPLICABLE.  
ALL RC LEDGES ARE EXCLUDED FROM STRATA AREA AND NON-LOAD BEARING.  
THE PLANS ARE SUBJECT TO CHANGE AS MAY BE REQUIRED BY RELEVANT AUTHORITIES.  
ALL AREAS AND MEASUREMENTS STATED HEREIN AS APPROXIMATE AND SUBJECT TO FINAL SURVEY.

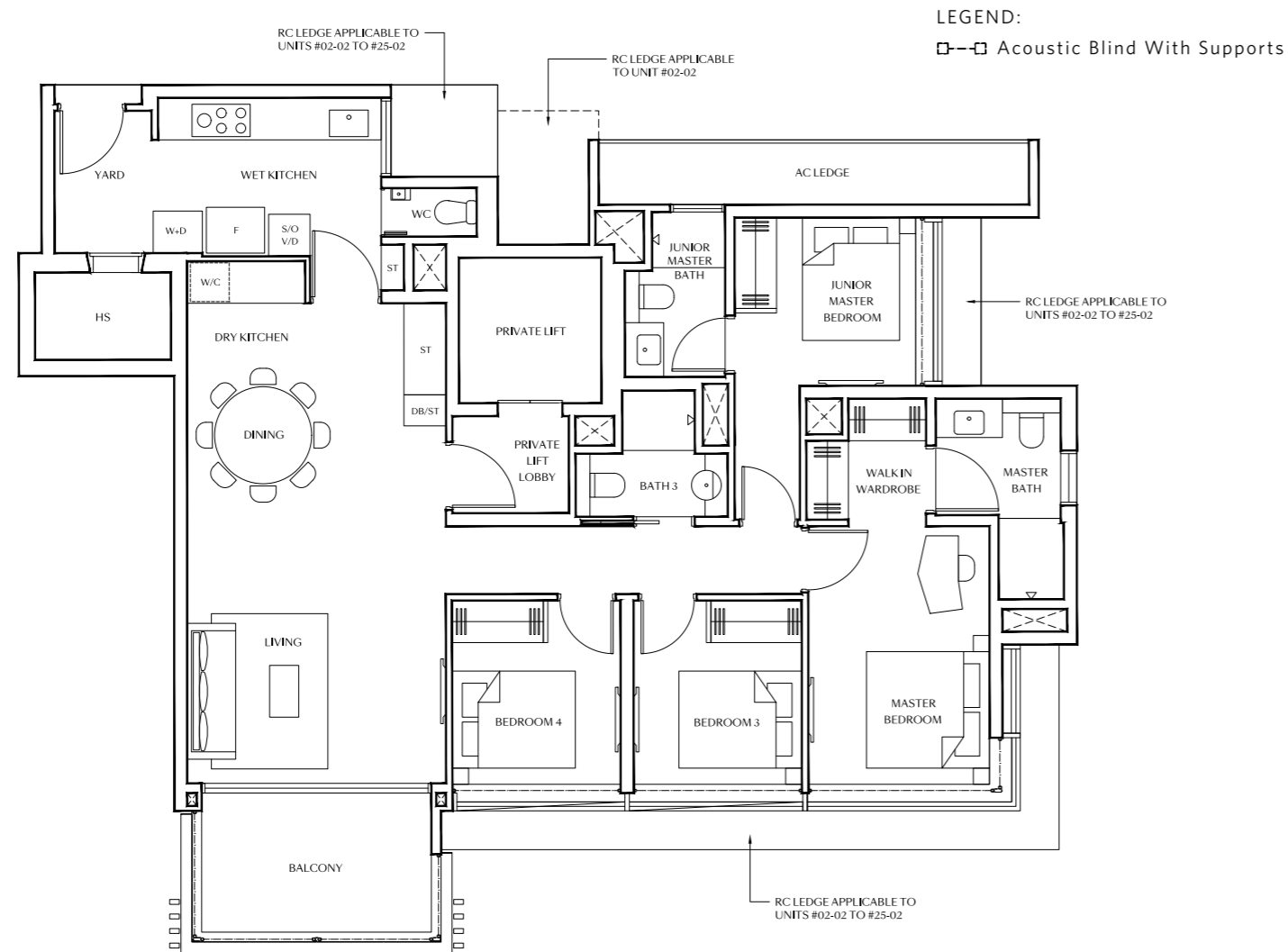
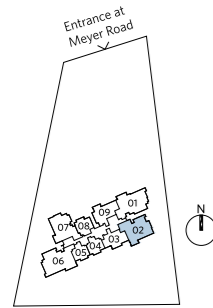
# 4-Bedroom Premium (with Private Lift)

TYPE DP1  
142 sqm (1528 sqft)  
#02-02 to #25-02

TYPE DP1(p)  
142 sqm (1528 sqft)  
#01-02



\*Not drawn to scale

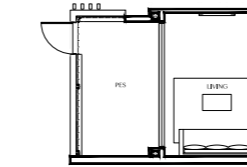


AREAS INCLUDE AC LEDGE, BALCONY OR PRIVATE ENCLOSED SPACE (PES), WHERE APPLICABLE.  
ALL RC LEDGES ARE EXCLUDED FROM STRATA AREA AND NON-LOAD BEARING.  
THE PLANS ARE SUBJECT TO CHANGE AS MAY BE REQUIRED BY RELEVANT AUTHORITIES.  
ALL AREAS AND MEASUREMENTS STATED HEREIN AS APPROXIMATE AND SUBJECT TO FINAL SURVEY.

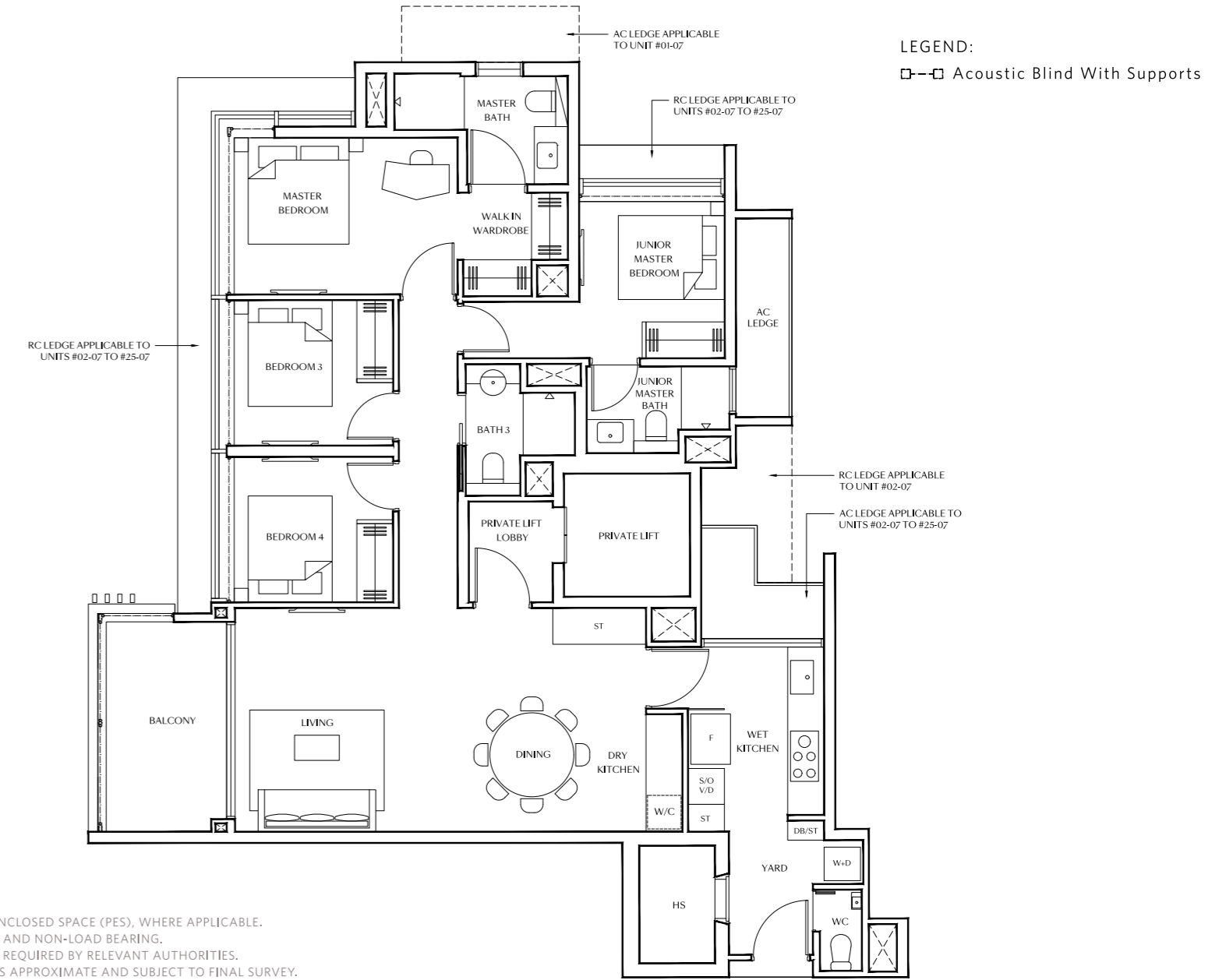
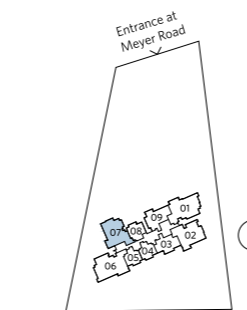
# 4-Bedroom Premium (with Private Lift)

TYPE DP2  
141 sqm (1518 sqft)  
#02-07 to #25-07

TYPE DP2(p)  
141 sqm (1518 sqft)  
#01-07



\*Not drawn to scale



AREAS INCLUDE AC LEDGE, BALCONY OR PRIVATE ENCLOSED SPACE (PES), WHERE APPLICABLE.  
ALL RC LEDGES ARE EXCLUDED FROM STRATA AREA AND NON-LOAD BEARING.  
THE PLANS ARE SUBJECT TO CHANGE AS MAY BE REQUIRED BY RELEVANT AUTHORITIES.  
ALL AREAS AND MEASUREMENTS STATED HEREIN AS APPROXIMATE AND SUBJECT TO FINAL SURVEY.

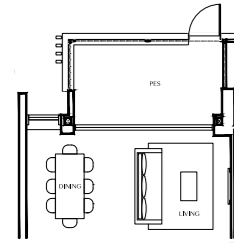
# 4-Bedroom Premium + Study (with Private Lift)

TYPE DPS1  
161 sqm (1733 sqft)

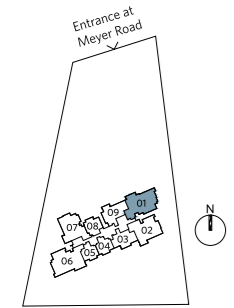
#02-01 to #25-01

TYPE DPS1(p)  
161 sqm (1733 sqft)

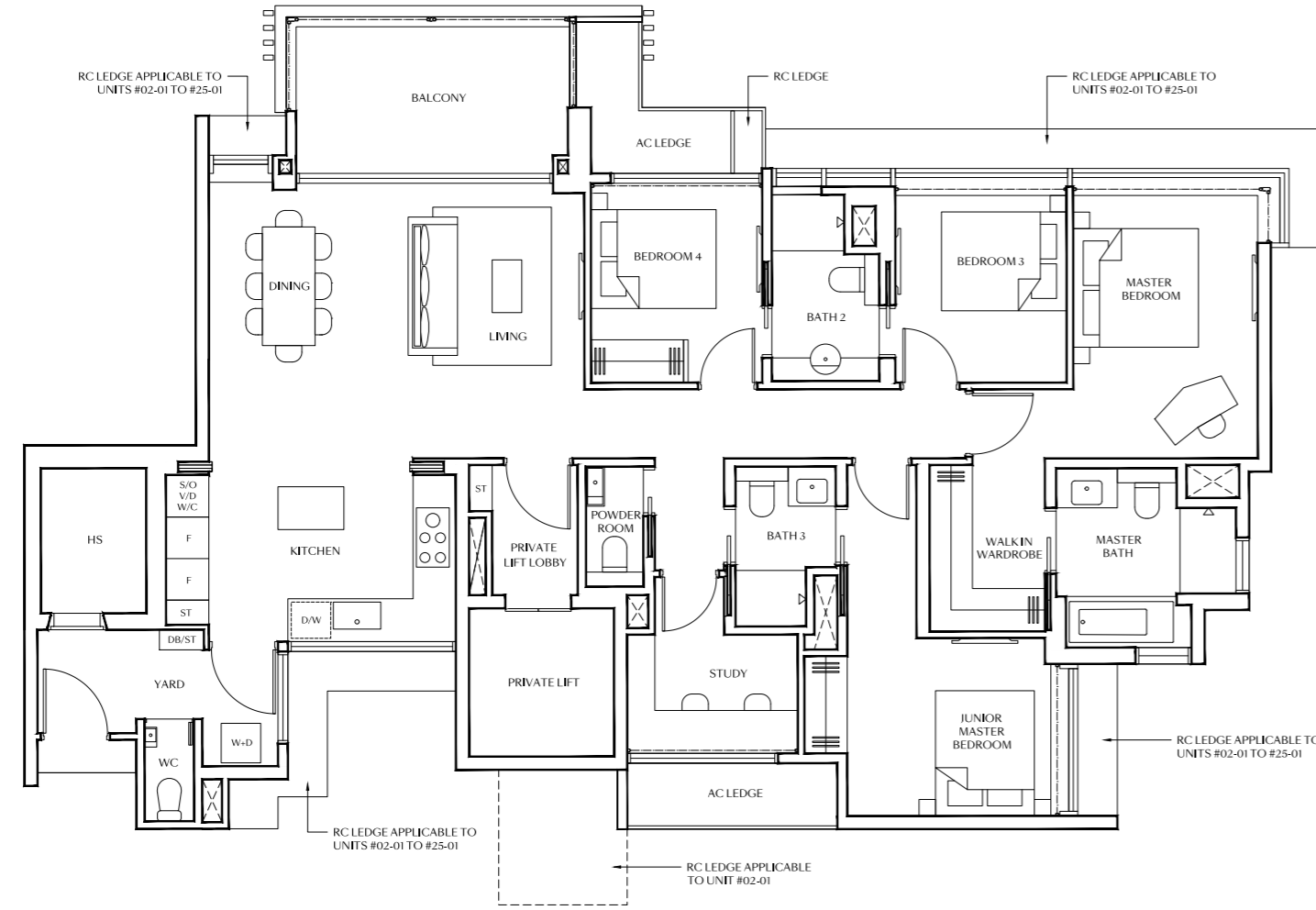
#01-01



\*Not drawn to scale



LEGEND:  
□--□ Acoustic Blind With Supports



AREAS INCLUDE AC LEDGE, BALCONY OR PRIVATE ENCLOSED SPACE (PES), WHERE APPLICABLE.  
ALL RC LEDGES ARE EXCLUDED FROM STRATA AREA AND NON-LOAD BEARING.  
THE PLANS ARE SUBJECT TO CHANGE AS MAY BE REQUIRED BY RELEVANT AUTHORITIES.  
ALL AREAS AND MEASUREMENTS STATED HEREIN AS APPROXIMATE AND SUBJECT TO FINAL SURVEY.

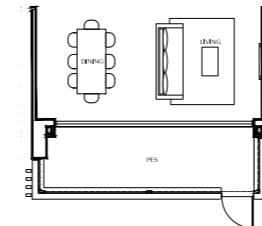
# 5-Bedroom Suite (with Private Lift)

TYPE E1  
177 sqm (1905 sqft)

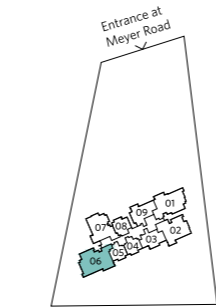
#02-06 to #25-06

TYPE E1(p)  
177 sqm (1905 sqft)

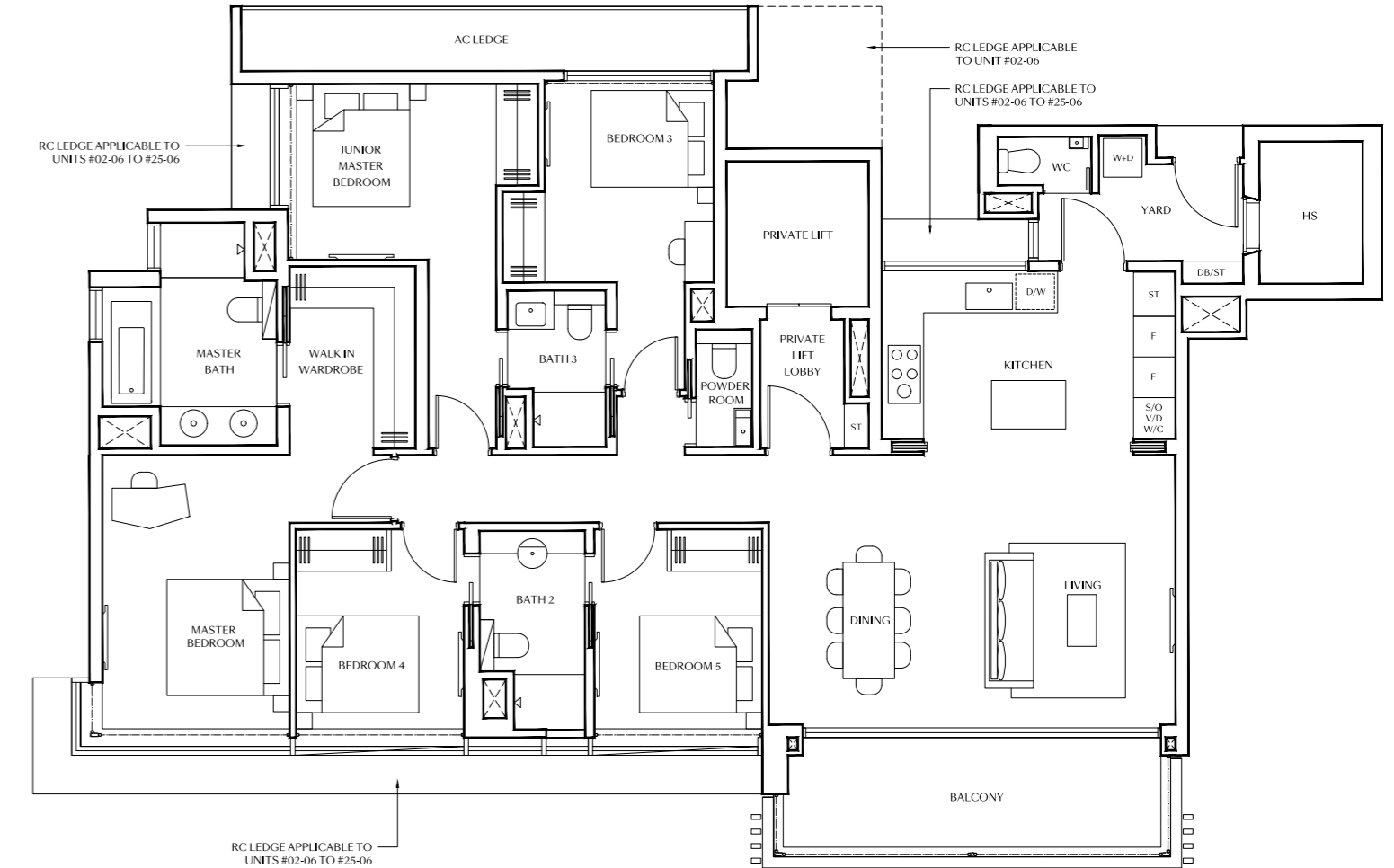
#01-06



\*Not drawn to scale



LEGEND:  
□--□ Acoustic Blind With Supports



AREAS INCLUDE AC LEDGE, BALCONY OR PRIVATE ENCLOSED SPACE (PES), WHERE APPLICABLE.  
ALL RC LEDGES ARE EXCLUDED FROM STRATA AREA AND NON-LOAD BEARING.  
THE PLANS ARE SUBJECT TO CHANGE AS MAY BE REQUIRED BY RELEVANT AUTHORITIES.  
ALL AREAS AND MEASUREMENTS STATED HEREIN AS APPROXIMATE AND SUBJECT TO FINAL SURVEY.

## MEYER BLUE Penthouse

With the most space and time for life's finest facets, the expansive cabana in the sky is designed for relishing every heightened sensation of life at the top – one that's radically extraordinary.




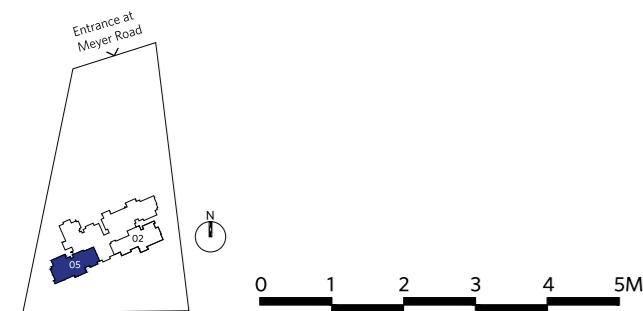
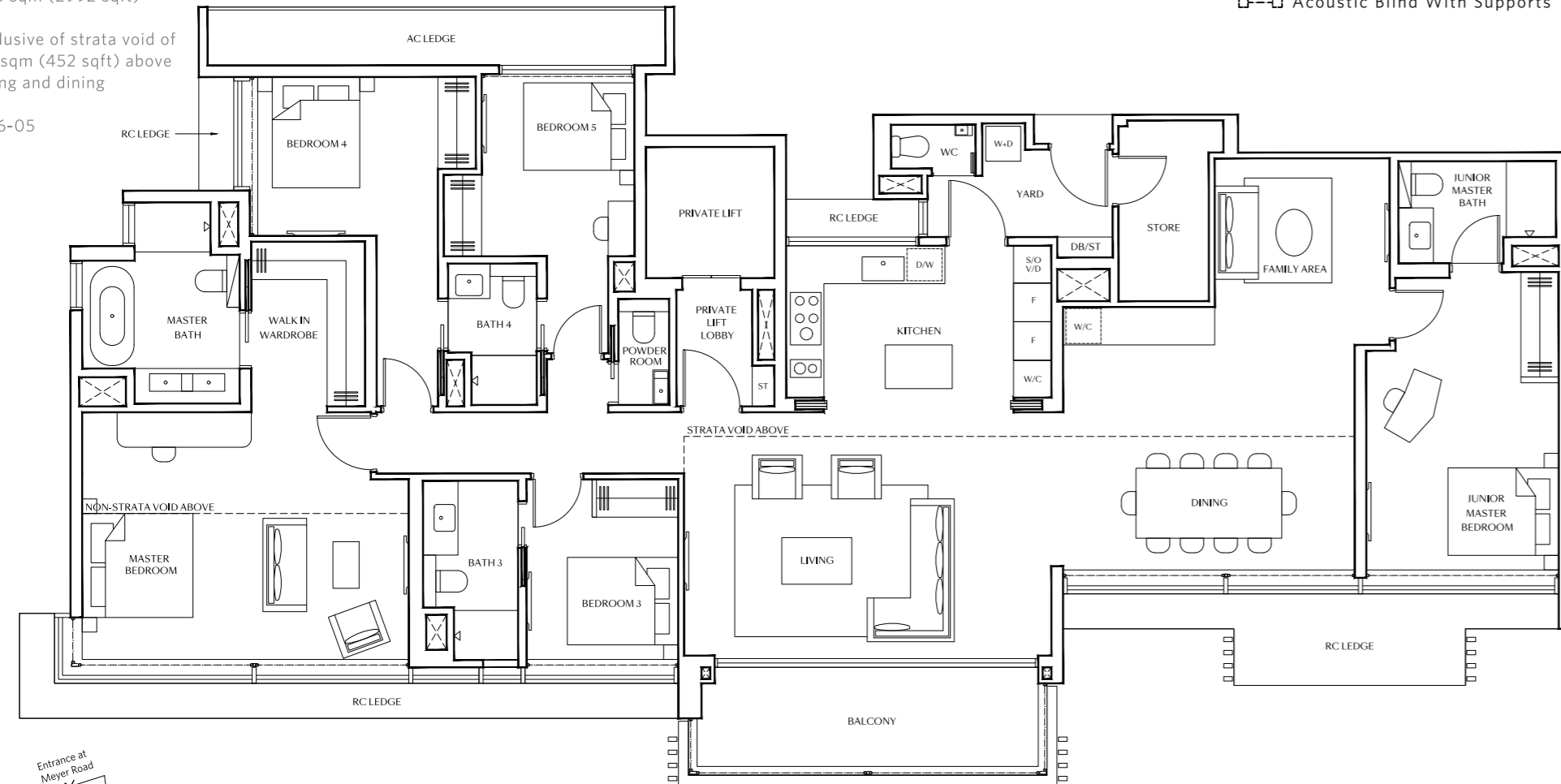
# Penthouse

TYPE PH1  
278 sqm (2992 sqft)

Inclusive of strata void of 42 sqm (452 sqft) above living and dining

#26-05

LEGEND:  
 Acoustic Blind With Supports



AREAS INCLUDE AC LEDGE, BALCONY OR PRIVATE ENCLOSED SPACE (PES), WHERE APPLICABLE.  
 ALL RC LEDGES ARE EXCLUDED FROM STRATA AREA AND NON-LOAD BEARING.  
 THE PLANS ARE SUBJECT TO CHANGE AS MAY BE REQUIRED BY RELEVANT AUTHORITIES.  
 ALL AREAS AND MEASUREMENTS STATED HEREIN AS APPROXIMATE AND SUBJECT TO FINAL SURVEY.

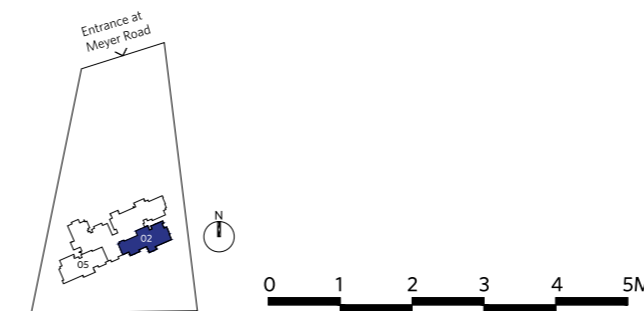
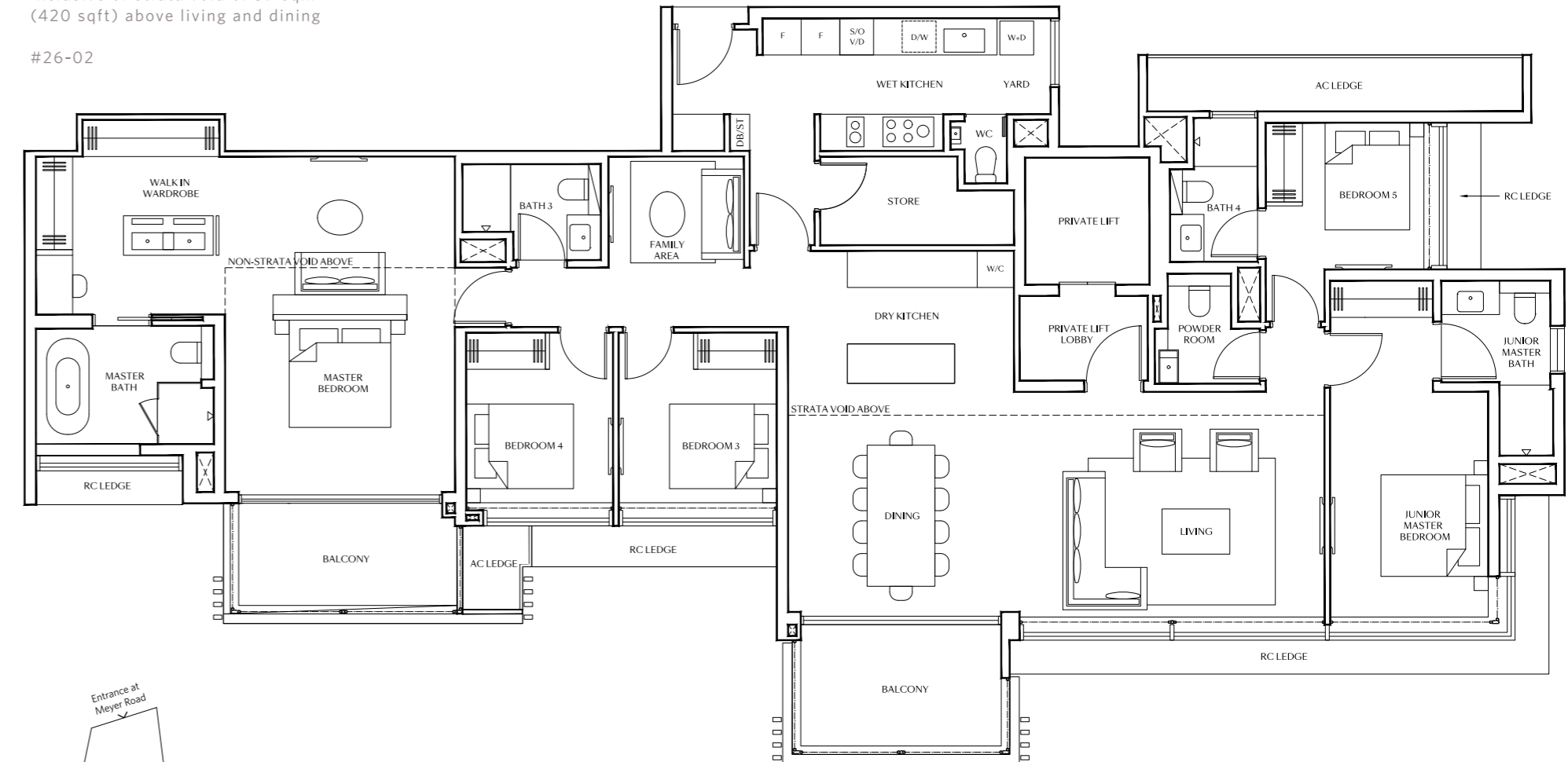
# Penthouse

TYPE PH2  
274 sqm (2949 sqft)

Inclusive of strata void of 39 sqm (420 sqft) above living and dining

#26-02

LEGEND:  
 Acoustic Blind With Supports



AREAS INCLUDE AC LEDGE, BALCONY OR PRIVATE ENCLOSED SPACE (PES), WHERE APPLICABLE.  
 ALL RC LEDGES ARE EXCLUDED FROM STRATA AREA AND NON-LOAD BEARING.  
 THE PLANS ARE SUBJECT TO CHANGE AS MAY BE REQUIRED BY RELEVANT AUTHORITIES.  
 ALL AREAS AND MEASUREMENTS STATED HEREIN AS APPROXIMATE AND SUBJECT TO FINAL SURVEY.

Luxury Masterpieces by the Inspiring Partnership Between Trusted, Award-Winning Developers



UOL Group Limited's freehold luxury masterpiece collection is a continual evolution of architectural renaissance. From 'Luxury Living by Botanic Gardens' at Nassim Park Residences to 'Mansion in the Park' at Meyer House, 'Tranquillity on the Hill' at Watten House, and now 'Experiential Luxury by the Coast' at MEYER BLUE, each project is a new achievement in UOL's spectacular luxury gallery, a portraiture of what nature has to offer.



UOL Group Limited (UOL) is one of Singapore's leading public-listed property companies with total assets of about \$20 billion. The Company has a diversified portfolio of residential, commercial developments and investment properties, hotels and serviced suites in Asia, Oceania, Europe and North America. With a track record of 60 years, UOL strongly believes in delivering product excellence and quality service in all its business ventures. UOL, through its hotel subsidiary Pan Pacific Hotels Group Limited, owns three acclaimed brands namely "Pan Pacific", PARKROYAL COLLECTION and PARKROYAL. The Company's Singapore-listed property subsidiary, Singapore Land Group Limited, owns an extensive portfolio of prime commercial assets and hotels in Singapore.



UOL Homes is a collection of high quality homes by UOL Group, a leading developer and a trusted brand with proven track record of 60 years. We bring dedicated minds together, harmonising them to create endearing Masterpieces and enduring environments that are liveable. In doing so, we bring people and place together.



Singapore Land Group Limited (SingLand) is a premier real estate company listed since 1971. Working across a diverse portfolio of real estate including commercial offices, residential and retail properties and hotels, SingLand takes a holistic approach to development. Our residential portfolio is made up of a stellar cast of properties including Mon Jervis and V on Shenton while our commercial assets include some of Singapore's best-known commercial and retail landmarks such as UIC Building, Singapore Land Tower, The Gateway and Marina Square. From setting benchmarks to building landmarks, our residential and commercial portfolios represent our dedication to creative excellence and ambition to create inclusive and sustainable environments that elevate communities towards a better future.



MEYER BLUE



DEVELOPER  
United Venture Development (Meyer) Pte. Ltd.

COMPANY REGISTRATION NUMBER  
202219183K

DEVELOPER'S LICENSE NUMBER  
C1488

TENURE OF LAND  
Estate in Fee Simple

ENCUMBRANCES  
Mortgage IJ/45398C lodged in favour of  
Oversea-Chinese Banking Corporation Limited

EXPECTED DATE OF NOTICE OF VACANT POSSESSION  
31 December 2028

EXPECTED DATE OF LEGAL COMPLETION  
31 December 2031

LOT & MUKIM NUMBER  
Lot 04029P MK25 at Meyer Road

OFFICIAL MARKETING AGENCY

**Huttons**  
SINGAPORE'S LARGEST  
PRIVATE REAL ESTATE AGENCY  
ESTATE AGENT LICENCE NO.: L3008899K